

Patient-Centered MAT Retention: Shifting the Paradigm

Erica Morse, MSW, MPH
Program Manager, Strategic Initiatives
LifeLong Medical Care

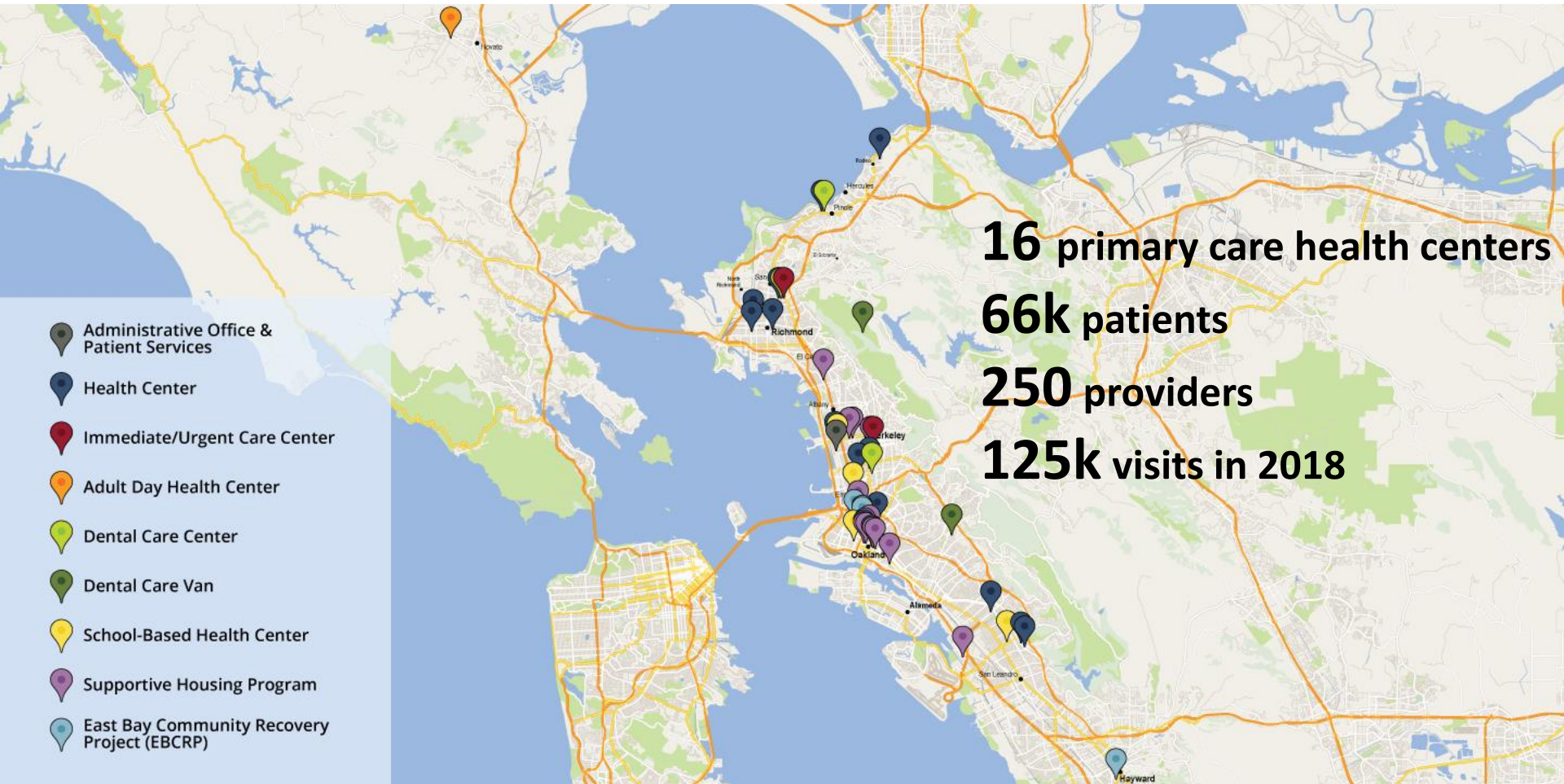
www.lifelongmedical.org



**LifeLong
Medical
Care**
Health Services For All Ages
a california *health* center

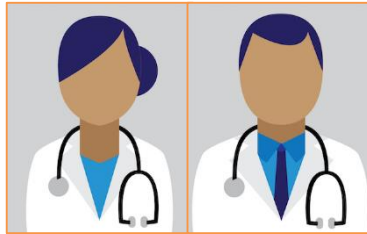
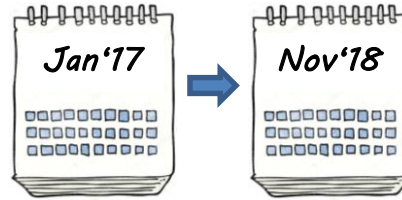


Who is LifeLong Medical Care?



What does LifeLong MAT look like?

23 months of data



16 providers

7 health centers

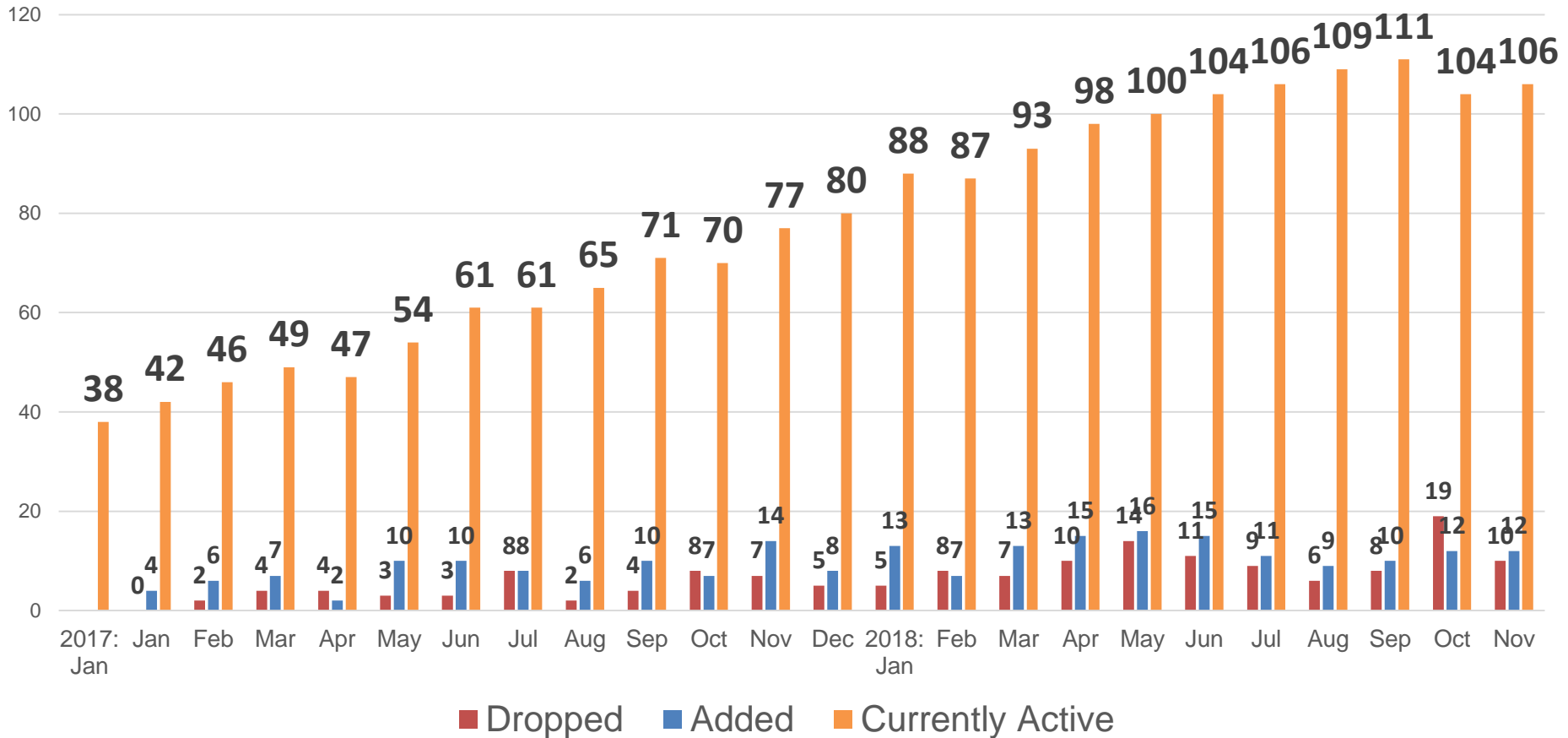


149 inductions

106 active patients



LifeLong MAT Net Growth (Jan17-Nov18)



What should we be doing differently?

MAT retention data collection and analysis should reflect the **natural history** of addiction recovery.

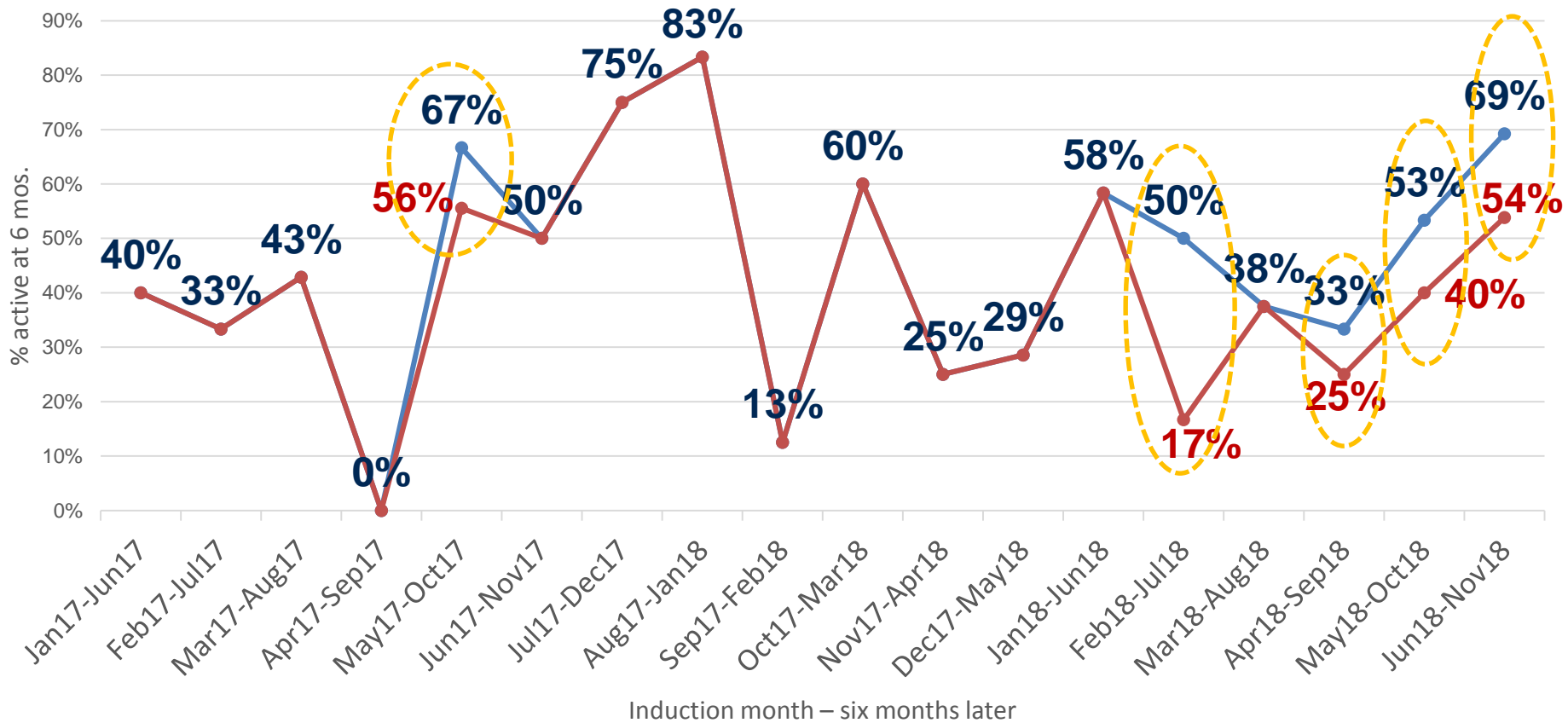
How could we do it differently?

Monthly cohort: group of patients inducted in a particular month

Data set: January 2017 – June 2018 (18 monthly cohorts of inducted patients)

Traditional retention tracking	Patient-centered retention tracking
Examines initial six-month period of MAT.	Examines ongoing MAT in six-month intervals.
Patients that drop from MAT and return start over in new cohort.	Patients that drop from MAT and return rejoin original patient cohort.

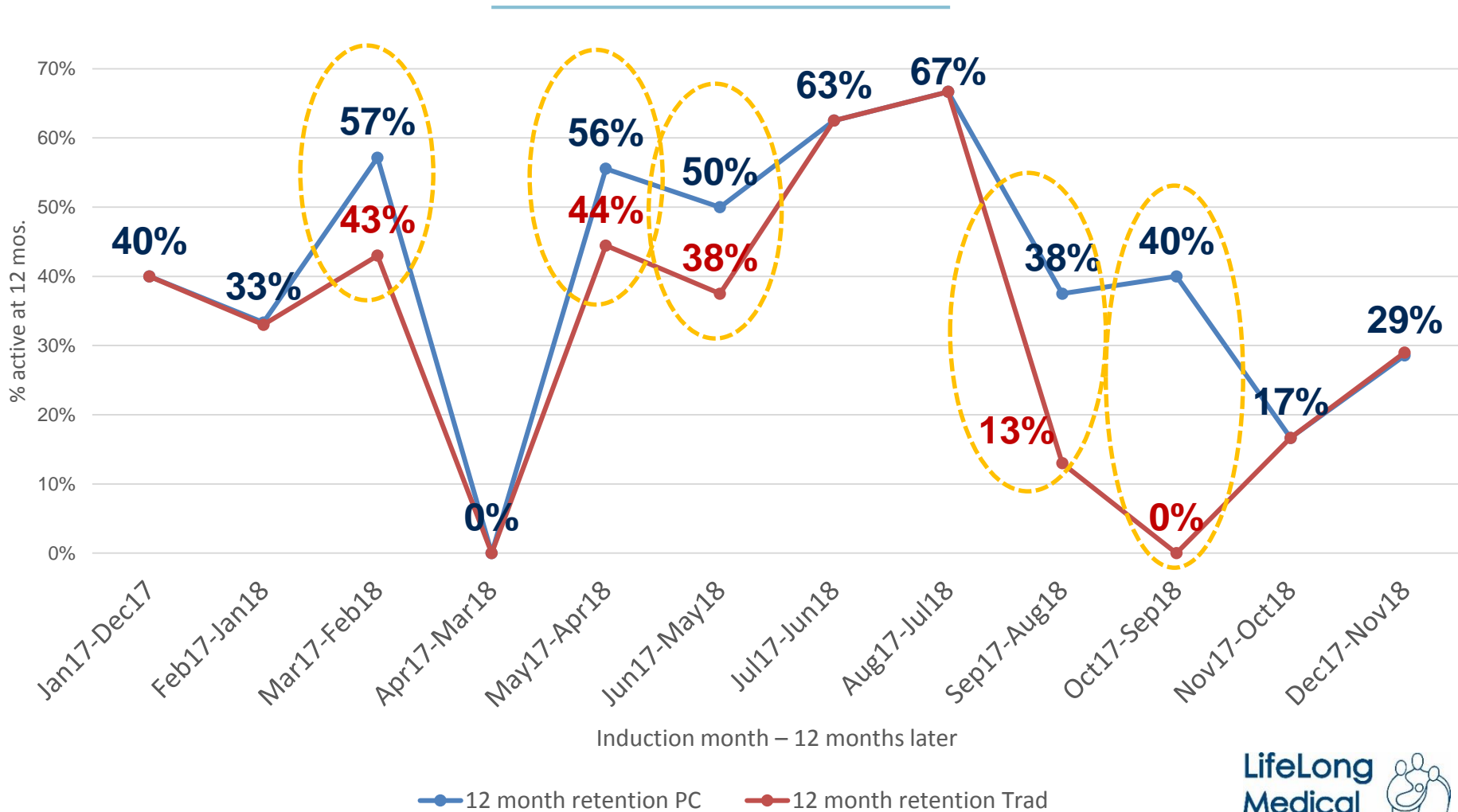
What do the differences look like at 6 months?



● 6 month retention PC ● 6 month retention Trad

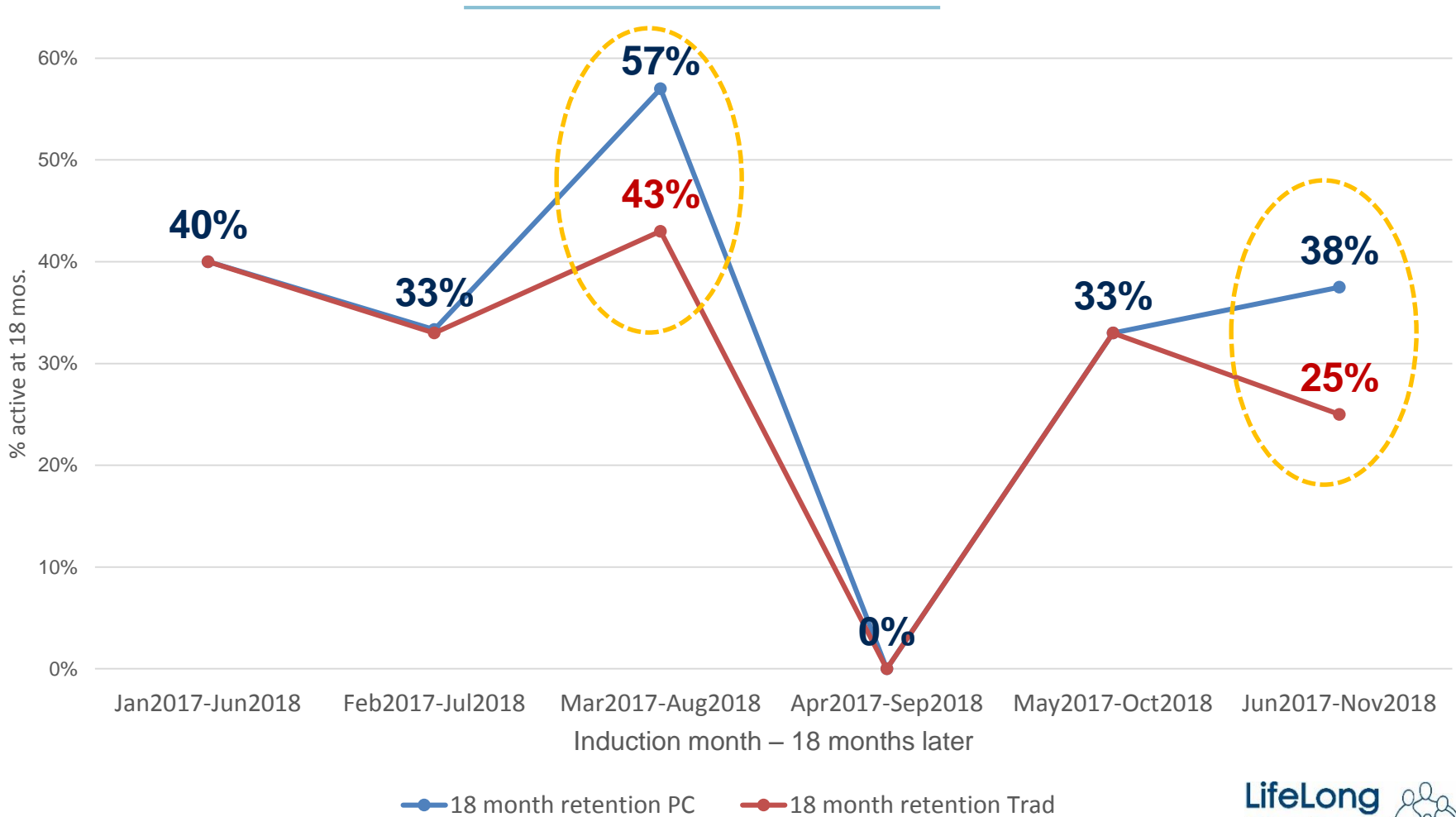
Patient-Centered MAT Retention

What do the differences look like at 12 months?



Patient-Centered MAT Retention

What do the differences look like at 18 months?



Patient-Centered MAT Retention

How could we do it differently?

Monthly cohort: group of patients inducted in a particular month

Data set: January 2017 – June 2018 (18 monthly cohorts of inducted patients)

Traditional retention tracking	Patient-centered retention tracking
Examines initial six-month period of MAT.	Examines ongoing MAT in six-month intervals.
Patients that drop from MAT and return start over in new cohort.	Patients that drop from MAT and return rejoin original patient cohort.
Does not report circumstances of treatment cessation.	Specifically reports circumstances of treatment cessation.

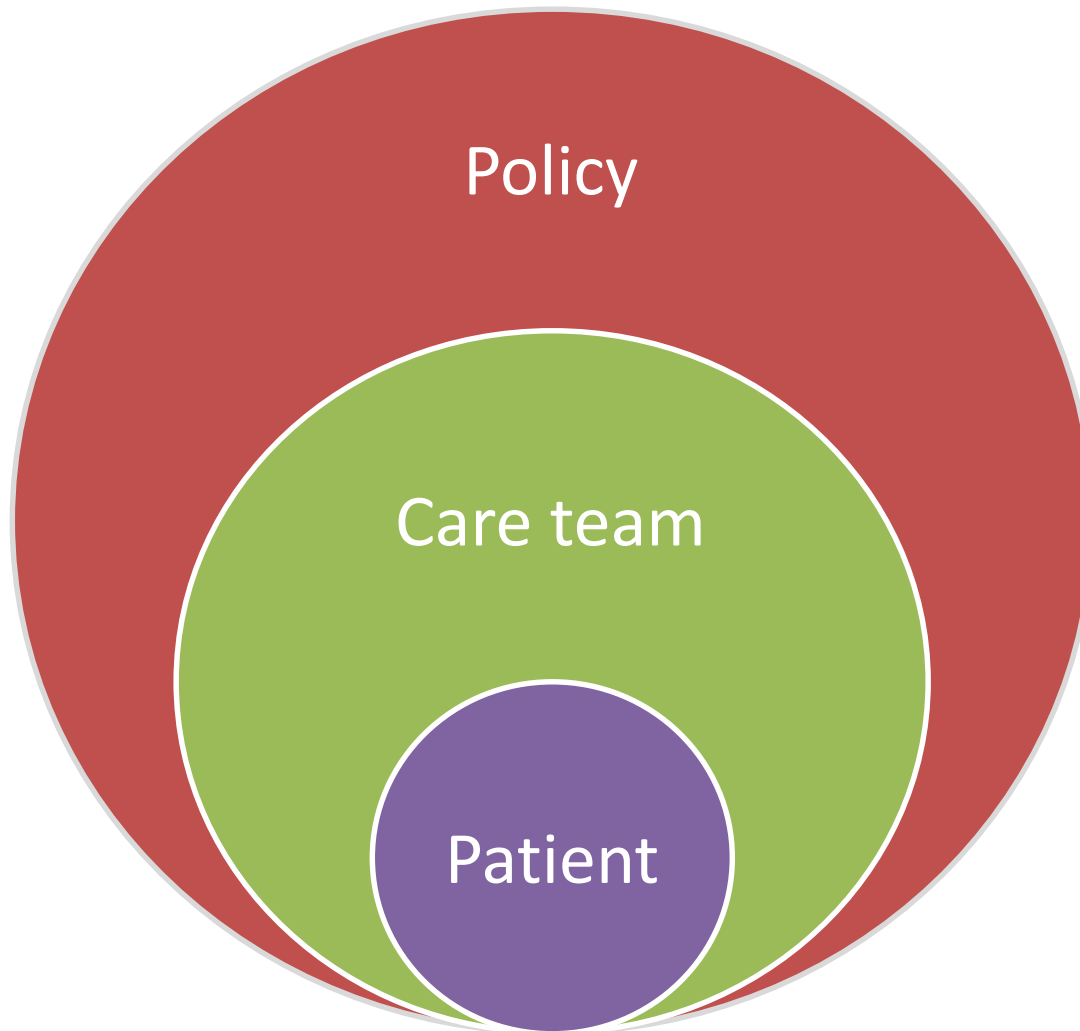
Why do patients leave?

Reason for drop from care	No. of patients dropped from care (%)
Total # patients dropped from care	92
Deceased	3 (3.3%)
Lost to follow-up as of Nov. 18	74 (80.4%)
Relocation out of area	5 (5.4%)
Taper to sobriety	4 (4.3%)
Transfer to MAT community partner	6 (6.5%)



16% of patients leave MAT without necessarily relapsing.

Who does this impact?



Patient-Centered MAT Retention